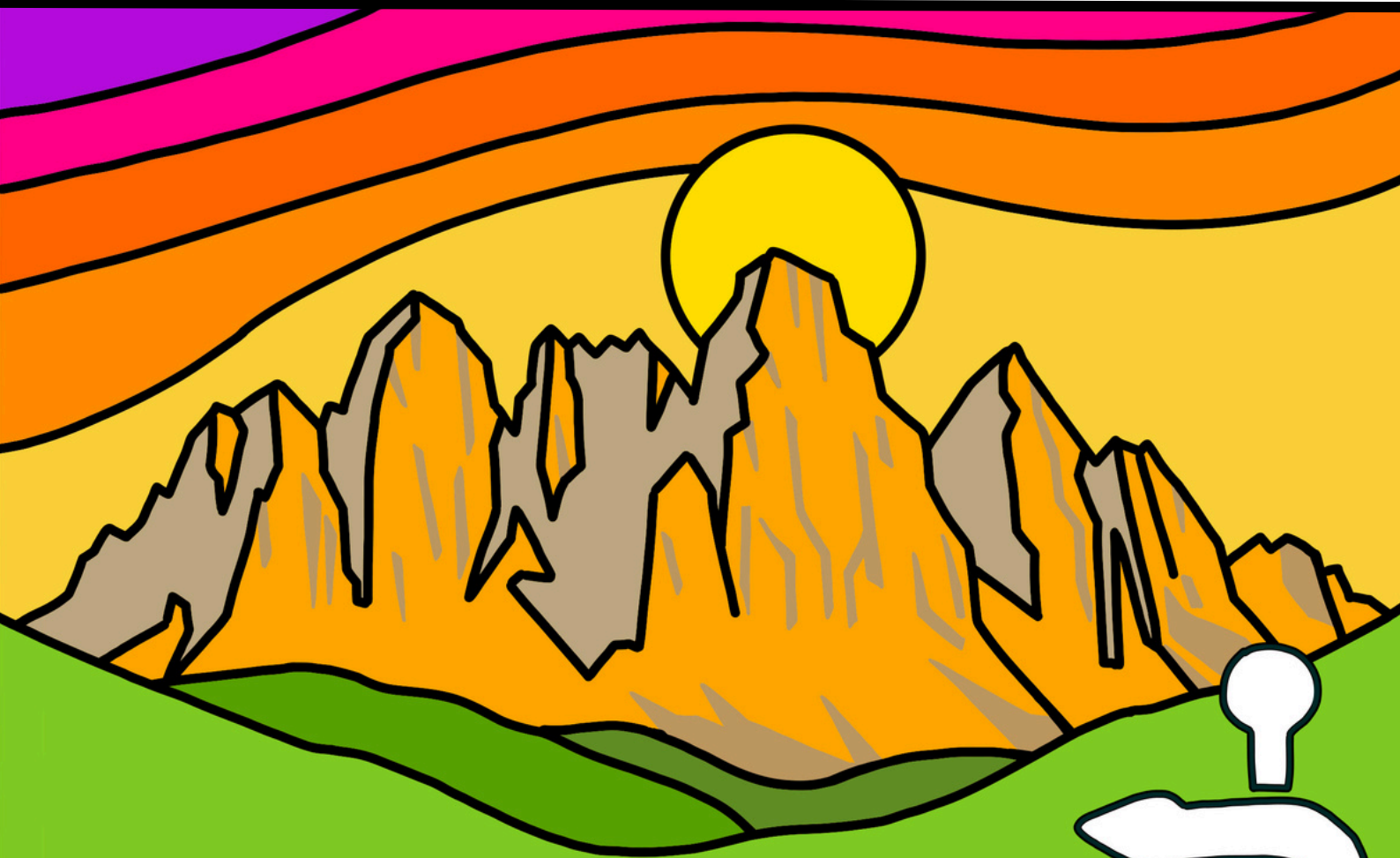




**ISMM**  
International Society  
for Mountain Medicine

**Friends &  
Partners  
Activities**



**WORLD CONGRESS ON  
MOUNTAIN  
MEDICINE**



**HATHERSAGE**

**2026**



# welcome



We are thrilled to welcome you to our Congress based in and around the iconic British village of Hathersage.

We chose Hathersage as a venue with its good road and rail communications for international airports and its central position in England, but also for its relaxing rural atmosphere.

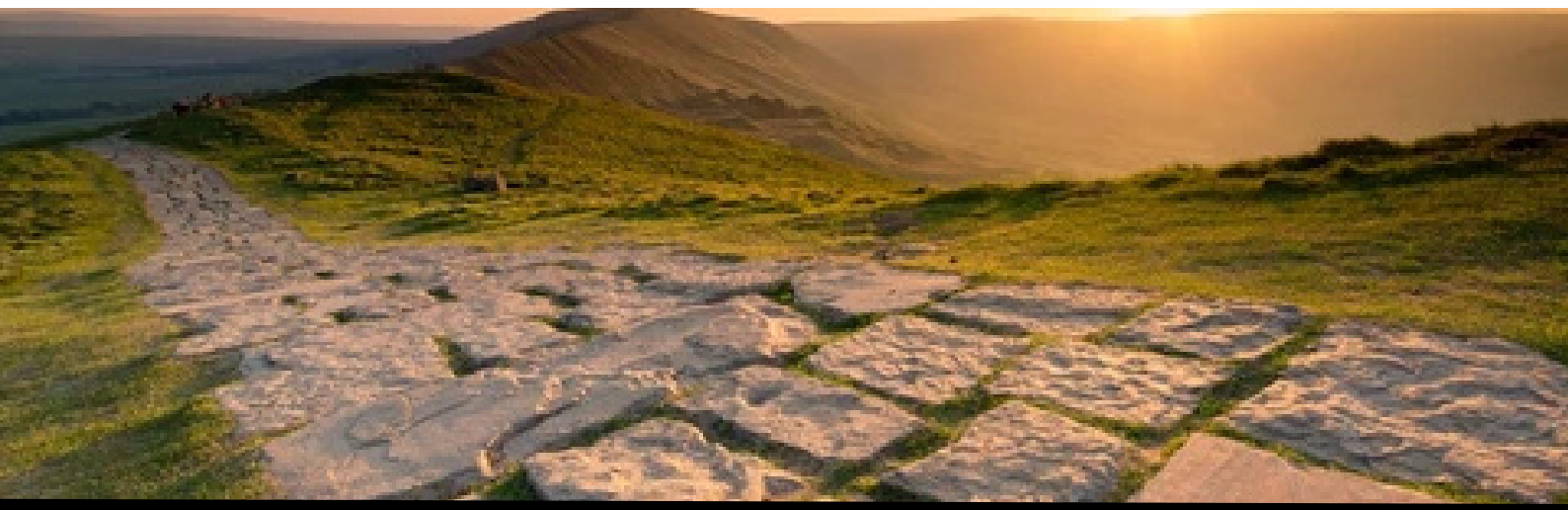


For over 200 years it has been a walking and later rock climbing centre for outdoor enthusiasts based in the surrounding industrial cities of England.

For the last ten years, it has welcomed annual mountain medicine courses. We now look forward to extending this welcome to the international mountain medicine community.



# welcome



The village is surrounded by farming country but the valley also has an industrial heritage. There are rock edges on the moors above offering technical rock climbs. Access is easy by a network of public footpaths. Some of these are ancient trade routes between small churches and public houses (pubs which are drinking and often dining venues), these ensure a public right to walk on these paths.

Within the village itself we have restaurants, cafes, pubs, hotels with bars, churches and chapels, a cricket club and a heated outdoor swimming pool. Shops include a traditional English butcher, delicatessen, fish and chip shop, two general stores, a fruit and veg shop and one of the country's best outdoor retailers.

On the main street, opposite the fuel station, there is a sitting area with local information boards which will whet your appetite to explore the area. Here you will also find comfortable free public toilets (donations welcome).



*We hope you enjoy  
your time with us!*



## MEETING OLD FRIENDS, MAKING NEW FRIENDS

With so many potential activities and places of interest we are only formally organizing two trips (depending on demand), but hope people will organise joint activities. Please give your mobile phone number and email address to our welcome crew and we will start a 'Friends and Partners' Whatapp group to aid your planning, and also so we can email you details of activities..



A popular local Café and social centre “The Open House” is located next to The George Hotel and opposite the Outside shop. The owners Andre and Regine are dedicating a table for Friends and Partners. It is a mellow place with a tempting menu and cakes. We will ensure that there are a stock of maps, train and bus timetable and leaflets available.



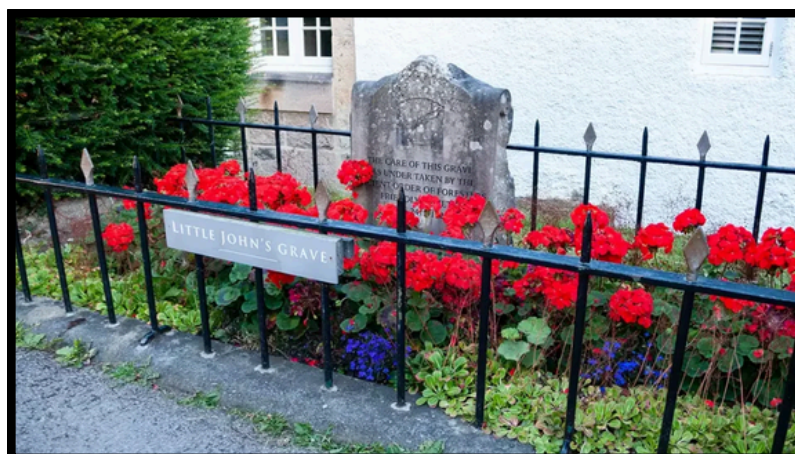


The whole of England is criss-crossed by public footpaths and bridleways where the general public have a legal right to walk or run (or ride a horse). They are clearly marked on our national Ordnance Survey maps at a scale of 1:50000 or 1:25000 and on other walkers maps such as those published by Harveys. The 1:25000 show field boundaries making map reading easier. Many of these paths are signposted at junctions,

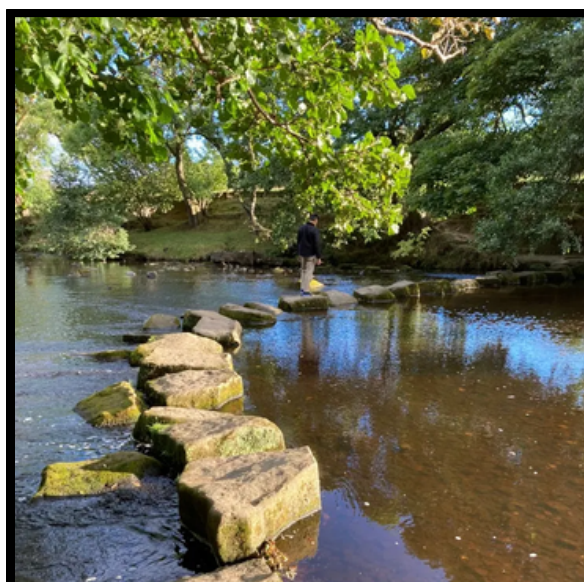
## Particularly fun round trip walks from Hathersage include...



The Jane-Eyre Walk from the village through field and woods to visit Stangedge climbing crag



Shorter walk to visit Littlejohn's grave. "Little" John was a very tall outlaw and one of Robin Hoods band of merry men, famous in English folklore and the later Hollywood films.



Beside the river with stepping stones.





## BICYCLE HIRE

A great way to see the area on road or on trails. Cycles can be hired from Hope Valley Bike Hire located 2 miles west of Hathersage (walk or bus) at the Bike and Boot hotel in Bamford. [hopevalleybikehire.co.uk](http://hopevalleybikehire.co.uk)



## TRAIN

The unmanned Railway Station is located eight minutes walk from the village centre. Tickets can be purchased from a machine on the platform. To reach the westbound platform go under the small bridge located at the entrance to the station car park. It is possible to buy tickets online in advance.



Further details, timetables for the hourly trains can be found here: [Northern Rail](#)

## BUS SERVICES



There is an excellent bus service number 272 and 271 which runs from Hathersage to Castleton (to the west) and to Sheffield (to the east).

[High Peak Buses \(services 271 & 272\)](#)

## LOCAL TAXIS



Licensed, metered taxis are available throughout the Derbyshire Dales, with pre-booking recommended. Ride-hailing apps such as Uber operate locally, though availability can vary.

Galaxy Travel - 01246 272727  
Penny's Cars - 07917 710771  
Veezu - 0114 2393939  
RAJ SOS Taxis - 07541 101076



## CAFES

Open House is the meeting place for Friends and Family wanting to meet during the Congress but do not ignore the upstairs café in the Outside shop. It has some magnificent mountain artwork on the walls.

The Swimming Pool café is known for its homemade cakes (Mmmmm)

Colemans Deli is set back from the main road next to The Bank and does lovely salads, yummy cakes and other tempting fare. Colemans Deli has agreed to open from 7:30am especially for the congress to accommodate your breakfast coffee needs! Indoor and outdoor seating and one can order in advance online.

[colemansdeli.com](http://colemansdeli.com)





## PLACES TO DRINK, EAT & STAY

For a traditional English pub visit the Scotsman's Pack.  
[scotsmanspackcountryinn.co.uk](http://scotsmanspackcountryinn.co.uk)



The George is the hotel of the village with a large bar that is open to the public.  
[thegeorgehathersage.com](http://thegeorgehathersage.com)



Fish and Chips are the traditional British take away meal. Hathersage Fish & Chips shop is located next to The Bank and is open Wednesday through to Sunday.  
[hathersagefishandchips.com](http://hathersagefishandchips.com)



## MORE PLACES TO DRINK, EAT & STAY

The Vintners wine bar located between the George and The Little John with a Pizza service in it's garden. Ideal on a summer evening.

[vintnersonthebrook.co.uk](http://vintnersonthebrook.co.uk)

The Bank House, that was originally a bank, is now known for its food and cocktails but also serves breakfasts.

[bankhousehathersage.co.uk](http://bankhousehathersage.co.uk)

The Plough Inn is located about five minute walk beyond the David Mellor Centre just across the river.

[ploughhathersage.com](http://ploughhathersage.com)





## David Mellor Centre

No visit to Hathersage is complete without dropping in at the David Mellor Centre. Built on the site of an old gas works it's five minutes walk from Hathersage station, just go down the hill and under the railway bridge. David Mellor (1930-2009) was a world leading designer in metal.



His designs range from functional cutlery to street furniture such as traffic lights, seats, waste paper baskets and lighting. The centre has a factory with bookable public tours. A tempting shop with cutlery, kitchen utensils and knives, pottery and glassware. Ponder your potential purchases whilst enjoying the excellent Riverside Restaurant.

[davidmellordesign.com](http://davidmellordesign.com)

## Chatsworth House

Chatsworth House is the seat of the Duke of Devonshire and was initially built in 1553 but has been extensively adapted, modernized and renovated since. It is one of the great stately homes of Britain and well worth a days visit.

[chatsworth.org/visit-chatsworth](http://chatsworth.org/visit-chatsworth)



### Getting There

Take the train from Hathersage Train Station to Sheffield (10 mins). From Sheffield City Centre you can catch the 218 Peakline bus which runs Sheffield Bus Interchange directly to Chatsworth House (25 mins). Alternatively, you could order taxi which would take around 15-20mins - advanced booking is recommended.

[Click here for the 218 Peakline bus timetable.](#)

Visit [Travel South Yorkshire](#) for public transport information.



## SHEFFIELD

For those who prefer the noise and bustle of big city life, Sheffield is located only 25 minutes away by train. It has museums, extensive shopping facilities and everything you would expect in a major post industrial city. For more information See: [welcometosheffield.co.uk/visit](http://welcometosheffield.co.uk/visit)

## MONEY

Most retail outlets in the area accept international Credit or Debit cards.

Train tickets can be purchased from machines on the Platform by card. Cash can be obtained from the ATM located in the Post Office. This is in the small general store at the Petrol (Gas) station on the main street in Hathersage.



## PARKING

Parking will be limited, so we recommend using public transport and getting around the village on foot where possible.

Paid parking is available at Hathersage train station and opposite the congress marquee on Oddfellows Road. We've also secured additional off-road parking for attendees at Hope Valley Ice Cream (S32 1BQ), this will be charged at £5 a day.

For more information, check out the congress website: [mountainmedicinecongress.com](http://mountainmedicinecongress.com)